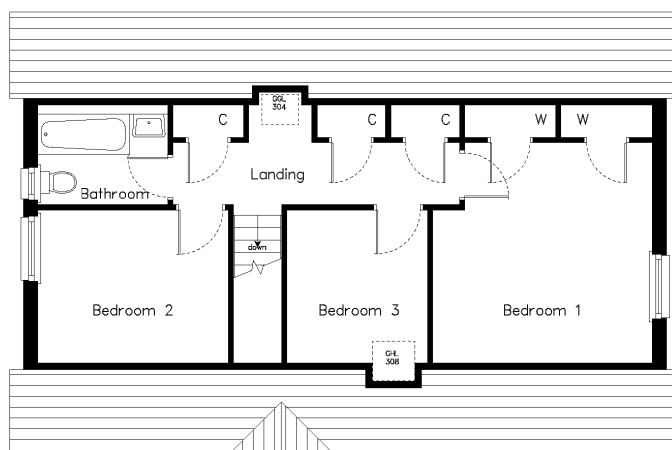
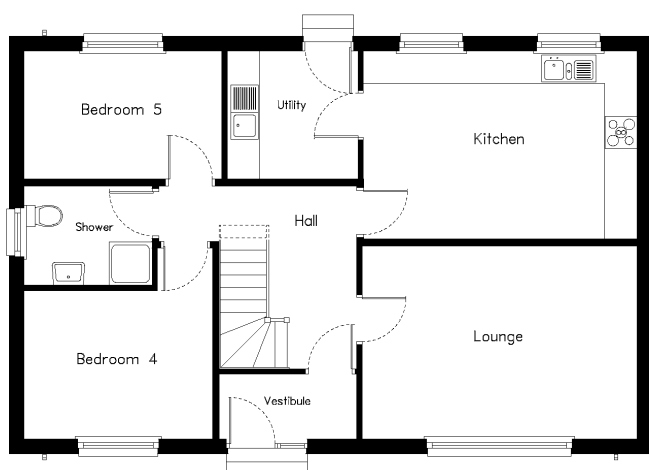


The Westerdale

An attractive 1½ Storey 4 bedroom villa.
 Floor Area :136.42 m².
 Frontage :11.91m.



Description	Width	Depth	Description	Width	Depth
Lounge	5125 (16' 9")	3600 (11' 9")	Bedroom 4	3528 (11' 6")	2770 (9' 1")
Kitchen	5100 (16' 8")	3505 (11' 5")	Bedroom 5	3700 (12' 1")	2400 (7' 10")
Utility	2460 (8' 0")	2400 (7' 10")	Bathroom	2430 (7' 11")	1810 (5' 11")
Bedroom 1	4087 (13' 4")	4100 (13' 5")	Shower	2408 (7' 10")	1865 (6' 1")
Bedroom 2	3553 (11' 7")	2860 (9' 4")			
Bedroom 3	2630 (8' 7")	2860 (9' 4")			