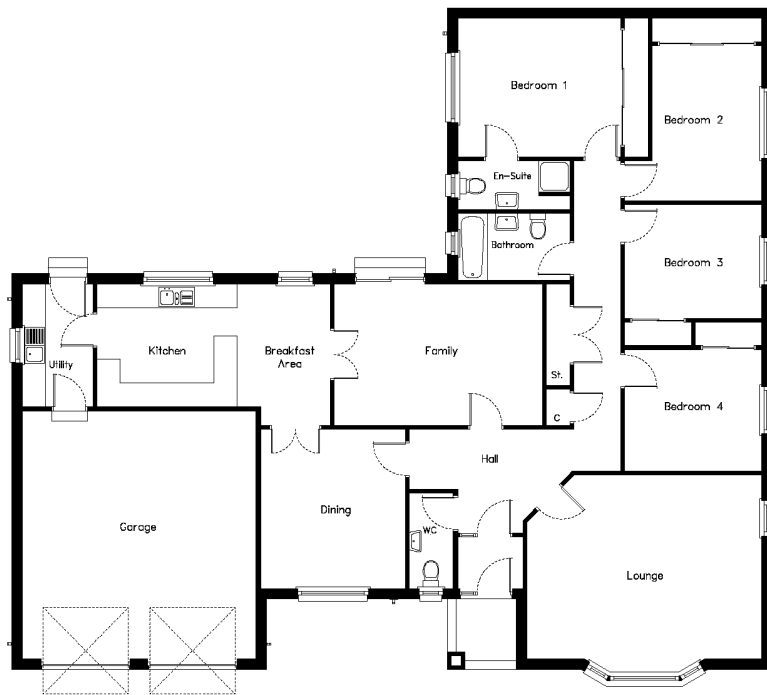


The Papigoe

A spacious 4 bedroom bungalow with integral garage.
 Floor Area :182.57 m².(excl. garage)
 Frontage :19.45m.(incl. garage)



Description	Width	Depth	Description	Width	Depth
Lounge	6030 (19' 9")	4730 (15' 6")	Bedroom 3	3530 (11' 6")	2930 (9' 7")
Dining	3730 (12' 2")	4100 (13' 5")	Bedroom 4	3530 (11' 6")	3130 (10' 3")
Family	5370 (17' 7")	3630 (11' 10")	Bathroom	2900 (9' 6")	1730 (5' 8")
Kitchen	6000 (19' 8")	3150 (10' 4")	EnSuite	2900 (9' 6")	1280 (4' 2")
Utility	1830 (6' 0")	3150 (10' 4")	WC	1150 (3' 9")	2460 (8' 0")
Bedroom 1	4200 (13' 9")	3506 (11' 6")			
Bedroom 2	2830 (9' 3")	3980 (13' 0")			