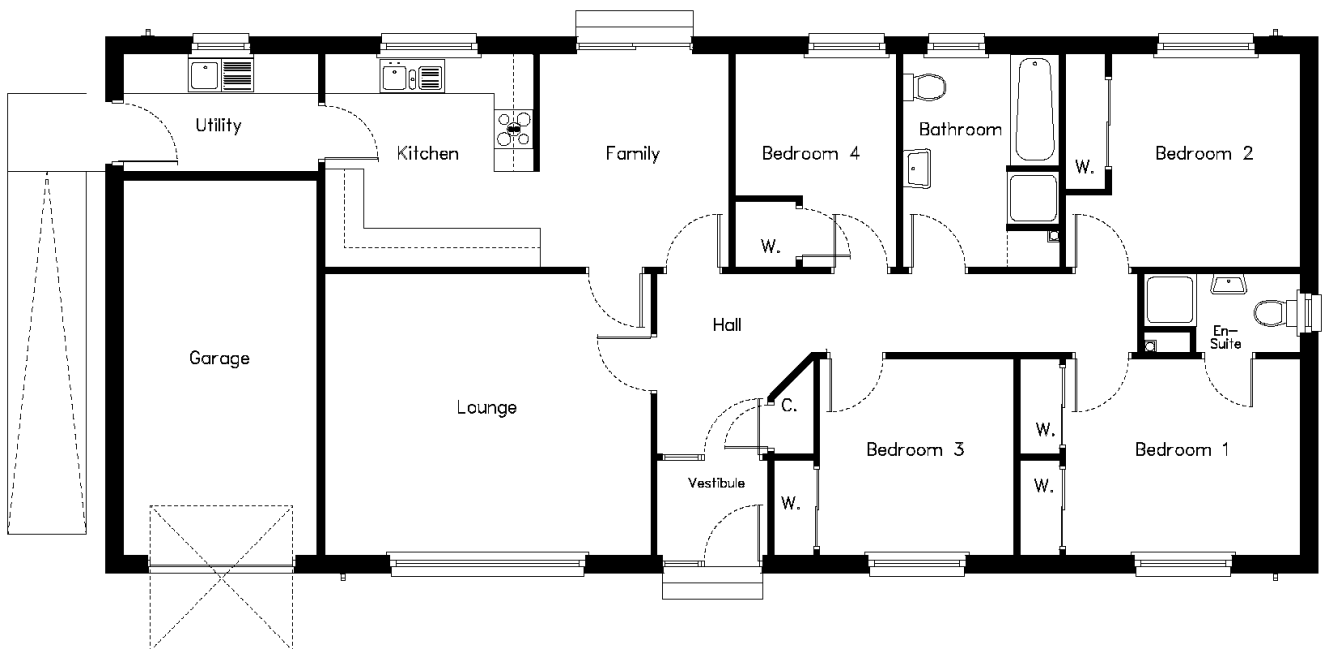


# The Barrogill 4

A versatile 4 bedroom bungalow.  
 Floor Area :122.55 m<sup>2</sup>. (excl. Garage)  
 Frontage :18.61m. (incl. Garage)



Description	Width	Depth	Description	Width	Depth
Lounge	5030 (16' 6")	3290 (10' 9")	Bedroom 2	2930 (9' 7")	3290 (10' 9")
Family	2930 (9' 7")	3290 (10' 9")	Bedroom 3	3005 (9' 10")	3040 (9' 11")
Kitchen	3230 (10' 7")	3290 (10' 9")	Bedroom 4	2505 (8' 2")	3290 (10' 9")
Bathroom	2430 (7' 11")	3230 (10' 7")	Garage	3000 (9' 10")	5775 (18' 11")
En-Suite	2430 (7' 11")	1230 (4' 0")			
Bedroom 1	3630 (11' 10")	3040 (9' 11")			